



SYS-2722A-M

Getting Started Guide

Audio Fidelity Testing for Windows Vista Logo

Contents

Audio Precision Contact Information	2
Introduction: The SYS-2722A-M	2
Installation Prerequisites for AP2700 Software	3
Connecting the Analyzer to the PC	4

Audio Precision Contact Information

Your local AP Sales Partner is the best source for sales-related questions.

You can find your local AP Sales Partner through any of the following methods:

- Visit the AP website: www.ap.com/contact
- Contact Sales Support via email: sales@ap.com
- Contact Sales Support via phone: 503.627.0832 x3

For free technical support relating to Audio Precision instruments, AP Tech Support is available from 9am to 5pm Pacific, Monday through Friday:

- Contact Tech Support via email: techsupport@ap.com
- Contact Tech Support via phone: 503.627.0832 x4

Introduction: The SYS-2722A-M

Microsoft Corporation has selected the **Audio Precision SYS-2722A audio analyzer** exclusively for its Windows Vista Logo Program Audio Fidelity tests.

The Windows Vista Logo Program (WLP 3.06) utilizes the Microsoft Driver Test Manager to test two audio fidelity requirements for Windows Vista that define the minimum requirements for audio fidelity on a Windows Vista PC

- Premium logo requirement -- SYSFUND-0118
- Basic logo requirement -- SYSFUND-0127

Please visit the Audio Fidelity page on the Microsoft Windows Hardware Developer Central website for more information.

To simplify ordering, Audio Precision has created a special product configuration of the SYS-2722A audio analyzer that includes all the filters and cables required by the Microsoft Driver Test Manager: the **SYS-2722A-M**.

This Getting Started document will help you set up your instrument ready for Vista Logo Program Audio Fidelity testing. For specific test instructions, please refer to the requirement specifications provided by Microsoft and the SYS-2722A User Manual that shipped with your Audio Precision SYS-2722A audio analyzer.

Installation Prerequisites for AP2700 Software

The Audio Precision SYS-2722A-M audio analyzer must be configured for use by the DTM software from Microsoft for Windows Vista Logo audio fidelity testing. The SYS-2722A-M must be connected to the AP Host machine and the AP2700 control software must be installed on that machine. The AP Host machine is the WinXP SP2 PC machine that must be configured with the DTM Client software. The DTM Client software will be controlled remotely from the DTM Controller machine during the audio fidelity testing process.

Follow the procedure below before using the Audio Precision SYS-2722A-M system with the Microsoft DTM software for Windows Vista Logo Audio Fidelity testing.

1. Install the AP2700 software and the computer interface card (PCI, PCIE, or PCMCIA) on the AP Host PC machine. Connect the APIB computer interface cable between the PC interface card and the instrument. Connect the power to the instrument. Turn on the instrument power switch. See the 2700 Series Getting Started manual for more information.
2. Run the AP2700 software at least one time. This is required to register the AP2700 software in the Windows registry and register the analog filters in the instrument.
3. Confirm that hardware measurements are correct. Run the AP2700 Control software with the instrument power on and connected. Perform the following setup steps:
 - a. Select File > New > Test
 - b. On the Generator panel, set OUTPUTS to ON.
 - c. On the Analyzer panel, set Channel A and Channel B Source to GenMon.
 - d. On the Analyzer panel, confirm Level measurements of 1 Volt.

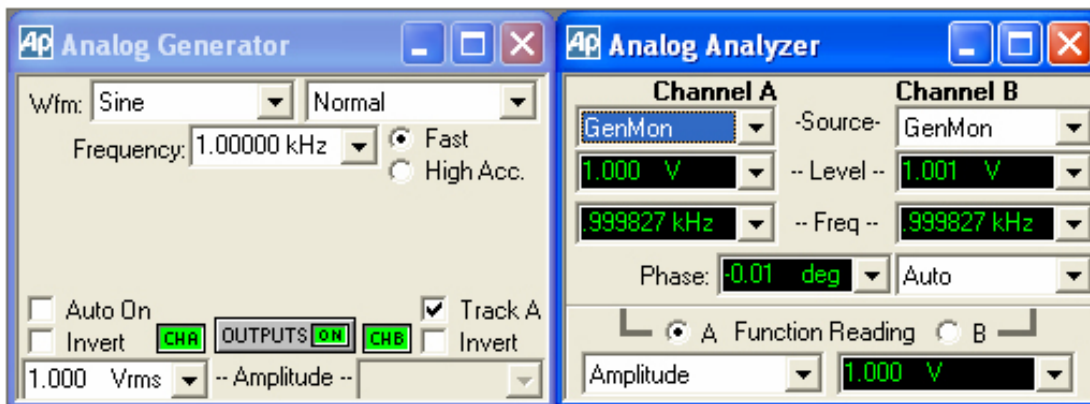


Fig 1: Generator and Analyzer Panels from Step 3

- Use the Utilities > Filters menu to display the filters Configuration dialog. The A-Weighting filter must be installed in slot 1. The AES-17 brick-wall filters should be installed in slots 6 and 7. Other filters may also be installed.
- Use the Analyzer panel to confirm that the AES-17 filters are selectable as Low Pass filters. The selection of 20 kHz AES17 must be available as a Low Pass filter.

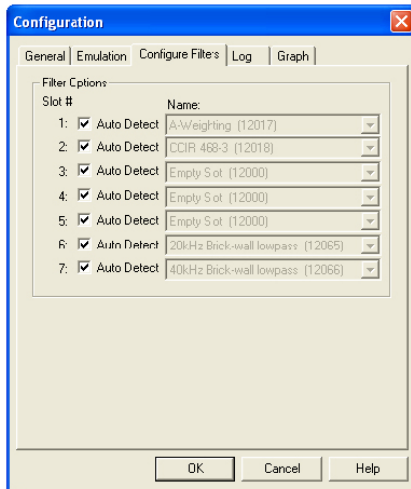


Fig 2: Filter Configuration dialog from Step 4

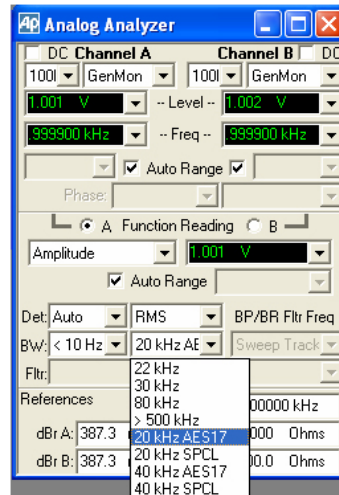


Fig 3: Analyzer Panel from Step 5

Connecting the Analyzer to the PC

The Audio Fidelity tests require a connection between the Audio Precision analog analyzer inputs and the Line-Out connector on the Windows Vista PC (the Left Front and Right Front line outputs of an 8 channel desktop system or the stereo outputs of a notebook system). This is the Green output 3.5 mm mini-jack connector on the rear panel of the PC. Connect this green connector to the Audio Precision analog analyzer BNC input connectors with the adapter cable and RCA-BNC adapters provided with the SYS-2722A-M. Minimize interference noise by establishing a good ground connection between the PC and the audio analyzer with the grounding cable provided with the SYS-2722A-M (alligator clip to male banana plug).

- Connect the RCA-female-to-BNC-male adapters to the Audio Precision Analog Input A and Analog Input B BNC connectors.
- Connect the Black RCA connector to Analog Input A RCA-female-to-BNC-male adapter.
- Connect the Red RCA connector to Analog Input B RCA-female-to-BNC-male adapter.
- Connect the 3.5 mm plug into the Green PC line output connector.
- Connect the grounding cable between the metal case of the PC and the ground lug on the front panel of the audio analyzer. A good connection to the PC motherboard ground plane is preferred for best noise immunity. A ground lug is available on the audio analyzer below the Analog Input A or Analog Input B BNC connectors. With notebook computers attach the alligator clip of the grounding cable to a connector shell or screw lug (such as a VGA, Serial, or Parallel port connector).